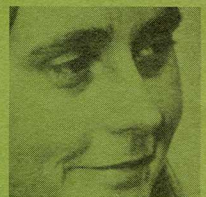


Produced by
The National Film Board of Canada
for the program

challenge for change société nouvelle



one of a group of films about

WORKING MOTHERS

designed to promote discussion about
the issues faced by women concerning
their work and their children in this
society

in cooperation with departments and
agencies of the Government of Canada

Distributed by
The National Film Board of Canada



Like the Trees

16mm Color
Time: 14 minutes 30 seconds

Rose is a Métis from northern Alberta,
a woman who has lifted herself out of
an anguished existence by rediscovering
her roots among the woodland Cree.

How do you live? What do you live on?

*I just never worry about those things
any more.*

You've left the city?

*I've left everything ... I'm just being
myself ... Like the trees, we belong here.*

Production, Direction and Editing:

Kathleen Shannon

Photography: Bob Nichol

Assistant Camera: Susan Gabori

Assistant Editors:

Gloria Demers and Elizabeth Joutel

Location Sound: Ted Haley

Negative Cutter: Mae Walsh

Re-recording: Jean-Pierre Joutel

Executive Producer: Len Chatwin

Questions to ask ourselves:

How many of us feel we "have to wear
a certain kind of clothes" or "speak a
certain way" in order to work outside
our homes?

"I just didn't feel like competing any
more, because I couldn't anyway." Do
many women feel like that?

Can we use anger more constructively
than we usually do – "put our fighting
to some use"?

"I started to search for something and
I didn't know what it was." Why was
this the beginning of a change for Rose?